

CARATTERISTICHE

140.39-139.07

136.12

129.07-127.16

119.80

85.06

83.88

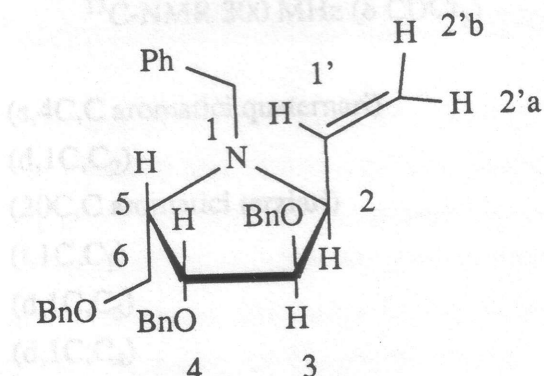
74.01-69.14

66.33

R_f = 0.76

52.64

[α]_D = -28.6°



esano:AcOEt 1:1

(in CHCl₃)

ANALISI ELEMENTARE

trovato

C=79.34%

H=6.65%

N=3.05%

teorico

80.88%

7.19%

2.70%

¹H-NMR 300 MHz (δ CDCl₃)

7.30	(m, 20H, Ph-H)
5.90	(ddd, 1H, H ₁ , J _{1'-2'a} = 17.1 Hz, J _{1'-2'b} = 9.8 Hz, J _{1'-2} = 9.8 Hz)
5.31	(dd, 1H, H _{2'b} , J _{2'b-2'a} = 1.6 Hz, J _{2'b-1'} = 9.8 Hz)
5.16	(dd, 1H, H _{2'a} , J _{2'a-2'b} = 1.6 Hz, J _{2'a-1'} = 17.1 Hz)
4.65-4.42	(6H, 3 O-CH ₂ -Ph)
4.30	(m, 2H, H ₆ , H _{6'})
3.97	(d, 1H, N-CH-Ph)
3.79	(dd, 1H, H ₃ , J = 9.8 Hz, J = 4 Hz)
3.77	(m, 1H, H ₂)
3.72	(d, 1H, N-CH-Ph)
3.55	(dd, 1H, H ₄ , J = 4 Hz, J = 9.8 Hz)
3.39	(m, 1H, H ₅)