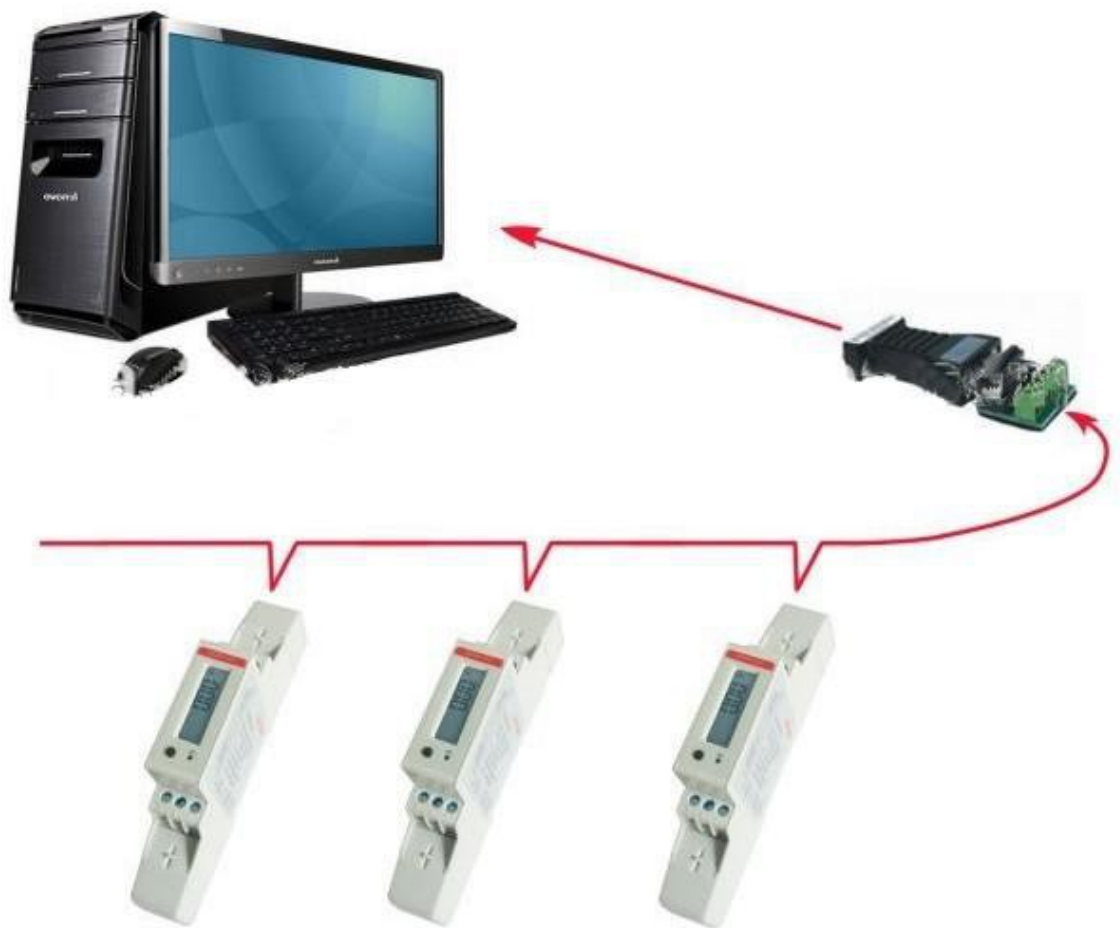


# Modbus connection of IndigoSCADA with SDM120

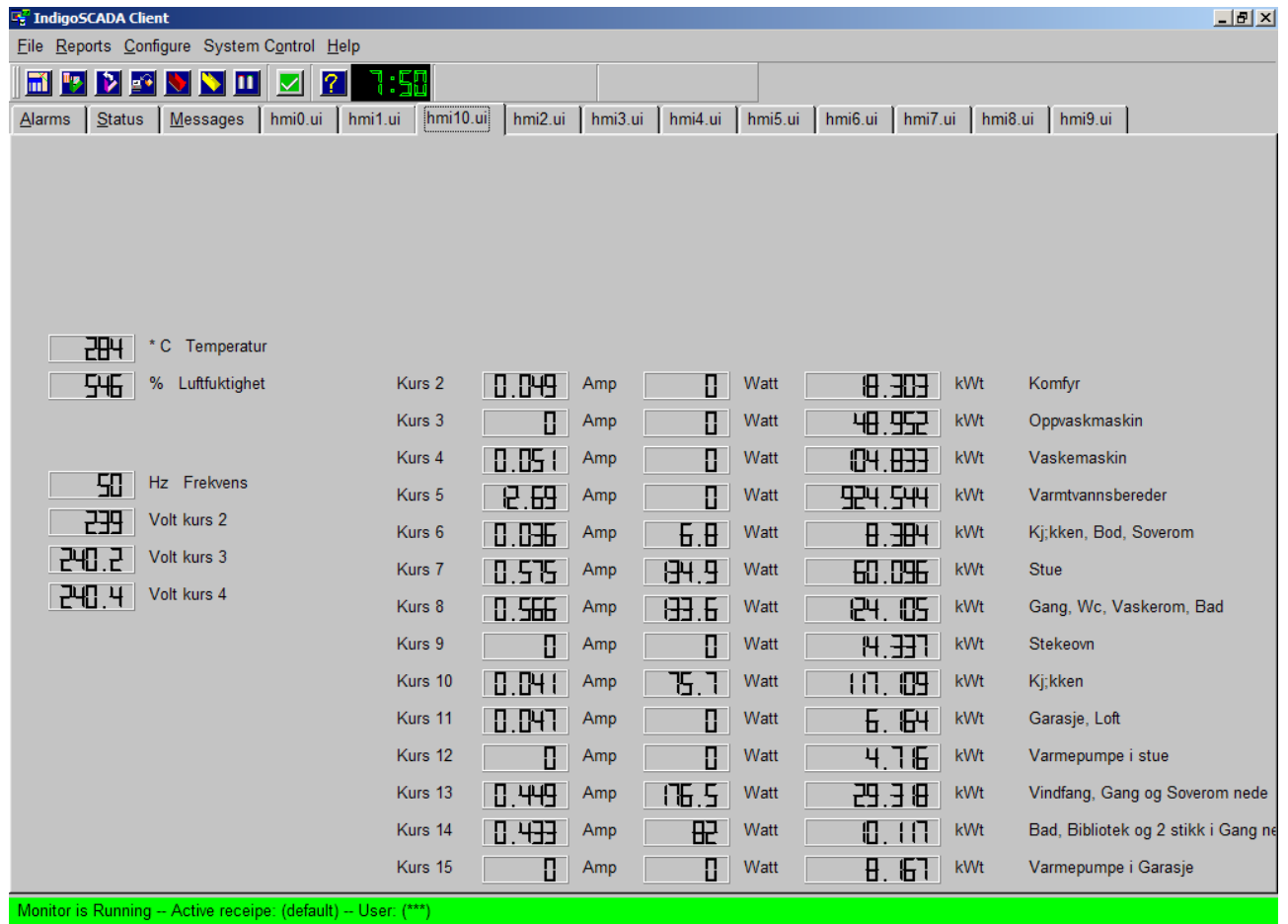
SDM120 is a single phase modbus energy meter.  
SDM120 are connected to the PC by means of a RS485 daisy-chain network with up to 32 modules.  
USB to RS485 adapter is necessary.



Configure IndigoSCADA with a new modbus RTU unit with the following modbus database:  
Taking the register address minus 30001 : so for Total Kwh. 30343 minus 30001 = offset address is 342

slave_id	modbus_function_read	modbus_function_write	modbus_address	modbus_type	ioa_control_center	deadband	Address Register
1	3	16	0 VT_I2		1	0	
1	3	16	1 VT_I2		2	0	
2	4	0	0 VT_R4SWAP		3	0 30001 Voltage Volts	
2	4	0	6 VT_R4SWAP		4	0 30007 Current Amps	
2	4	0	12 VT_R4SWAP		5	0 30013 Active power Watts	
2	4	0	70 VT_R4SWAP		6	0 30071 Frequency Hz	
2	4	0	342 VT_R4SWAP		7	0 30343 Total active energy kWh	

The HMI looks like this:



14 SDM120 mounted on din rail:

